





## TECHNICAL QUESTIONNAIRE

### 3. UTILITIES

**operating voltage:** \_\_\_\_\_ V AC \_\_\_\_\_ Hz.    **three phase:**     yes     no  
**control voltage:** \_\_\_\_\_ V AC \_\_\_\_\_ Hz.    \_\_\_\_\_ V DC  
**type of protection:** IP \_\_\_\_\_    **insulation class:** \_\_\_\_\_  
**explosion proofness required:**     yes     no    **explosion-proof type of protection:** \_\_\_\_\_  
**compressed air:** \_\_\_\_\_ bar    **dew point:** \_\_\_\_\_ ° F  
 dry

### 4. BAG TYPE

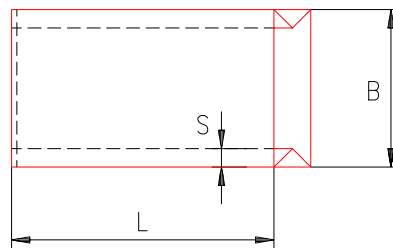
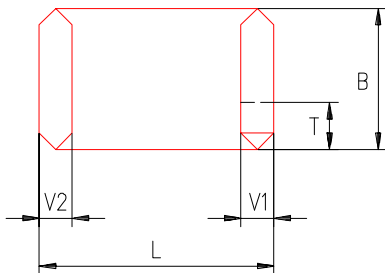
valve bag with internal valve     valve bag with external valve     top open bag  
 big bag (see Annex)     octabin     top open gusseted bag

description \_\_\_\_\_

**material:**     paper     PE     PP     woven cloth  
 laminated    number of plies \_\_\_\_\_

**bag closure:**     sewing     sealing     ultrasonic sealing

### 5. BAG DESIGN



	Filling weight (kg)	L (mm)	B (mm)	T (mm)	V1 (mm)	V2 (mm)	S (mm)	foil thickness (mm)
1.								
2.								

### 6. TIME SCHEDULE

planned date of commissioning of the equipment \_\_\_\_\_